

# DELTA INBOUNDS™

---

## Owner's Manual

© 2017 Garmin Ltd. or its subsidiaries

All rights reserved. Under the copyright laws, this manual may not be copied, in whole or in part, without the written consent of Garmin. Garmin reserves the right to change or improve its products and to make changes in the content of this manual without obligation to notify any person or organization of such changes or improvements. Go to [www.garmin.com](http://www.garmin.com) for current updates and supplemental information concerning the use of this product.

Garmin®, ANT+®, and the Garmin logo are trademarks of Garmin Ltd. or its subsidiaries, registered in the USA and other countries. BarkLimiter™, Delta Inbounds™, Garmin Canine™, and Garmin Express™ are trademarks of Garmin Ltd. or its subsidiaries. These trademarks may not be used without the express permission of Garmin.

The Bluetooth® word mark and logos are owned by the Bluetooth SIG, Inc. and any use of such marks by Garmin is under license. Other trademarks and trade names are those of their respective owners.

M/N: A03070, M/N: A03071

# Table of Contents

<b>Getting Started</b>	<b>1</b>
Setting Up the Delta Inbounds System	1
Device Overviews	1
Base Unit	1
Dog Collar Device	1
Charging the Dog Collar Device	1
Turning On the Dog Collar Device	1
Turning Off the Dog Collar Device	1
Installing Backup Batteries	1
Mounting Location Considerations	1
Installing the Base Unit	2
<b>Setting up a Boundary</b>	<b>2</b>
<b>Dog Training</b>	<b>2</b>
Attaching the Dog Collar Device to a Collar Strap	2
Fitting the Collar on Your Dog	3
Selecting and Installing the Contact Points	3
Training Methods	3
Setting the Intensity Level Using the Base Unit	3
Choosing the Correct Intensity Level	3
Training Your Dog to Use the Boundary	4
Training Timeline	4
Introducing Your Dog to the Boundary	4
Reinforcing Boundary Awareness Using Stimulation	4
Testing Boundary Awareness Using Distraction	4
Supervising Your Dog's Boundary Awareness	5
Training Tips	5
Taking Your Dog Out of the Boundary Area	5
Turning Off Containment	5
BarkLimiter	6
Automatic Intensity	6
Enabling the BarkLimiter Feature	6
Status LED	6
<b>Garmin Canine App</b>	<b>6</b>
Pairing Your Smartphone with the Dog Collar Device	6
Syncing the Dog Collar Device with the Garmin Canine App	6
<b>Pairing a Dog Collar Device with the Base Unit</b>	<b>6</b>
<b>Keep Away Tag Sensor</b>	<b>7</b>
Installing the Battery	7
Pairing the Sensor with Your Device	7
Tips for Setting the Range	7
Installing the Sensor	7
Tips for Installing the Sensor	7
<b>Pairing the Remote with Your Device</b>	<b>7</b>
<b>Customizing Your Device</b>	<b>7</b>
Setting an Alert Tone	7
Setting the Time	8
Resetting the Device to Factory Settings	8
<b>Device Information</b>	<b>8</b>
Viewing Dog Collar Device Information on the Base Unit	8
Base Unit Specifications	8
Delta Inbounds Dog Collar Device Specifications	8
Keep Away Tag Specifications	8
Product Updates	8
Updating the Software Using Garmin Express	8
Garmin Support Center	8
<b>Troubleshooting</b>	<b>8</b>
Tips for Improving Corrections	8
How can I keep my dog away from an area inside the containment area?	8
Can I use the containment system for the entire yard?	8
The base unit displays an error	8

The base unit is not sounding an alert tone	8
My dog collar device is not responding	9
How do I know which dog collar device is paired?	9
My dog is still barking	9
The bark detection is too sensitive	9
Maximizing Battery Life	9
Resetting the Dog Collar Device	9
<b>Index</b>	<b>10</b>



# Getting Started

## ⚠ WARNING

See the *Important Safety and Product Information* guide in the product box for product warnings and other important information.

## ⚠ WARNING

The dog collar device and wireless containment system are not recommended for use with aggressive dogs. Do not use this product if your dog is prone to aggressive behavior. The device is not designed or intended to restrain aggressive dogs. The dog collar device and wireless containment system should be used at the dog owner's discretion. Consult your veterinarian or a certified dog trainer to determine if this product is right for your dog.

## Setting Up the Delta Inbounds System

Complete these tasks to set up the Delta Inbounds system.

- 1 Charge the dog collar device (*Charging the Dog Collar Device*, page 1).
- 2 Install backup batteries in the base unit (*Installing Backup Batteries*, page 1).
- 3 Select a mounting location, and install the base unit (*Installing the Base Unit*, page 2).
- 4 Set up a boundary (*Setting up a Boundary*, page 2).
- 5 Train your dog to use the wireless containment system (*Training Your Dog to Use the Boundary*, page 4).

## Device Overviews

### Base Unit

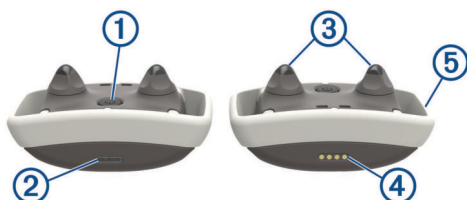


①	Keypad
②	Battery cover D-ring
③	Power port
④	Mini-USB port (under battery door)

### Keypad

OK	Select to choose menu options.
←	Select to return to the previous screen.
↑	Select to scroll through menus, options, and screens.
↓	

### Dog Collar Device



①	Power key
②	Status LED
③	Contact points
④	Charging clip contacts
⑤	Collar band

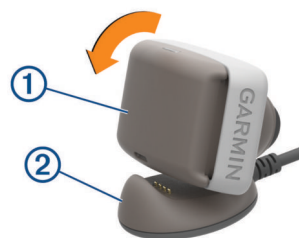
## Charging the Dog Collar Device

### NOTICE

To prevent corrosion, thoroughly dry the contacts on the dog collar device and the surrounding area before connecting the charging clip.

You should fully charge the battery before you use the device for the first time. Charging a fully depleted battery takes about three hours.

- 1 Snap the device ① onto the charging clip ②.



- 2 Plug the power cable into a power source.  
The status LED is solid red when the device is charging.
- 3 After the status LED turns solid green, remove the charging clip from the device.

### Turning On the Dog Collar Device

Hold the power key until the status LED turns green and the device beeps.

### Turning Off the Dog Collar Device

Hold the power key until the status LED turns solid red and the device beeps.

## Installing Backup Batteries

The base unit uses three AA batteries (not included). You should install backup batteries in the base unit to maintain an active boundary during a power outage.

- 1 Turn the D-ring counter-clockwise, and pull up to remove the cover.
- 2 Insert three AA alkaline batteries, observing polarity.



- 3 Replace the battery cover, and turn the D-ring clockwise.

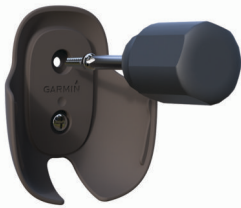
## Mounting Location Considerations

- The base unit should be approximately 1.5 m (5 ft.) above the ground when mounted.
- The base unit should be near a power source.

- The base unit should be away from metal structures, appliances, microwaves, and wireless routers for ideal operation.
- You must leave 1.5 m (5 ft.) of cable length to reach the power source.

## Installing the Base Unit

- 1 Choose a mounting location (*Mounting Location Considerations*, page 1).
- 2 Using two screws (not included), attach the mount to an exterior wall for best results.



- 3 Pull up the weather cap from the power port.
- 4 Plug the small end of the power cable into the port on the base unit.



- 5 Slide the base unit into the mount.



- 6 Plug the power cable into a power source.

## Setting up a Boundary

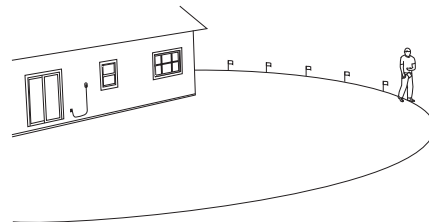
**NOTE:** You should consider property lines when installing the wireless containment system.

- 1 Turn on the dog collar device.



The base unit begins searching for the dog collar device. When paired, a preset boundary of 15 m (50 ft.) displays on the base unit.

- 2 On the base unit, select a dog, and select **Boundary**. The distance changes in 1.5 m (5 ft.) increments, to a maximum of 50 m (170 ft.).
- 3 With the dog collar device in hand, walk to the boundary. When you approach the boundary, you will hear an audible tone from the dog collar device.
- 4 Repeat steps 3 and 4 to adjust the distance to the boundary as needed for your yard.
- 5 Place a flag to mark the boundary.
- 6 Continue to walk the boundary, and place the remaining flags to provide a visual cue to your dog during training. You may need to cross in and out of the boundary to test it.



The boundary should be a semicircle around the base unit.

- 7 Use the audible tones from the dog collar device as a guide to verify the location of the boundary in your yard.

**NOTE:** Objects such as sheds, trees, cars, pools, or other structures in your yard will impact how the boundary responds. It is important that you understand the boundary location so you can properly introduce your dog to the Delta Inbounds wireless containment system.

You must train your dog to use the wireless containment system before leaving the dog outside without supervision.

## Dog Training

You should research and investigate the training methods best suited for you, your dog, and your needs.

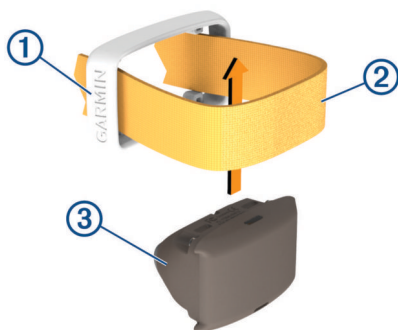
When used properly, the Delta Inbounds training system is an effective training tool to aid your dog in reaching his full potential. The use of the training system should be part of an overall training program.

You should read this section completely before training your dog. You can also view online videos to learn more about training your dog to use the Delta Inbounds system ([garmin.com/inboundstutorials](http://garmin.com/inboundstutorials)).

## Attaching the Dog Collar Device to a Collar Strap

You can attach the dog collar device to a collar strap that is a maximum of 25.4 mm wide (1 in.) and 2.78 mm thick (0.11 in.).

- 1 Remove the collar band ① from the device.



- 2 Select a collar band.
- 3 Loop the collar strap ② through the collar band.
- 4 Place the device ③ in the loop between the collar strap and the collar band.
- 5 Snap the collar band onto the device.
- 6 Pull the collar strap until it is tight across the front of the device.

## Fitting the Collar on Your Dog

### ⚠ CAUTION

To prevent irritation from the contact points, remove the collar for at least eight hours out of every 24-hour period.

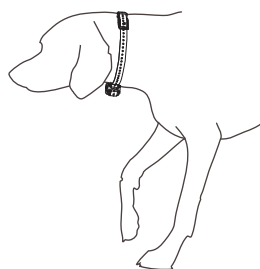
This device is not intended for human use. Do not attempt to use on any person.

Do not spray the device or collar with harsh chemicals including but not limited to flea or tick spray. Always ensure that any flea or tick spray that is applied to the dog is completely dry before placing the collar on the dog. Small amounts of harsh chemicals can damage the plastic components and collar laminate.

In order to effectively train the dog, the collar and device must fit the dog properly. If the collar is too loose or positioned incorrectly, stimulation may be inconsistent. This can delay or prevent successful training.

- 1 Position the device at the front of the dog's neck, with the status LED facing toward the dog's chin and the contact points against the throat.  
**TIP:** For bark correction, the device contact points should be positioned near the dog's vocal cords. This location varies based on the breed of dog. If the device does not seem to detect the dog's barks, you should move the device closer to or farther from the dog's body to find the ideal location.
- 2 Tighten the strap so that it is very snug around the dog's neck, and fasten the buckle.

**NOTE:** The collar should fit tightly and should not be able to rotate or slide on the dog's neck. The dog must be able to swallow food and water normally. You should observe your dog's behavior to verify that the collar is not too tight.



- 3 Wiggle the device to work the contact points through the dog's coat.  
**NOTE:** The contact points must have contact with the dog's skin to be effective.

- 4 If the strap is too long, cut off the excess, leaving at least 8 cm (3 in.) to spare.

**TIP:** You can mark the hole used to fasten the buckle for future reference.

## Selecting and Installing the Contact Points

For best results, you should install contact points based on your dog's coat.

- 1 Select the correct contact point length for your dog's coat type:
  - For dogs with thicker coats, use the longer contact points.
  - For dogs with shorter coats, use the shorter contact points.
- 2 Twist the contact points into the collar until tight.

When you put the collar on the dog, make sure the contact points are tight against the neck.

## Training Methods

**Stimulation:** Applies a brief stimulation when the dog enters the boundary, for a maximum of 8 seconds. You can adjust the stimulation intensity level in the Garmin Canine™ app ([Garmin Canine App](#), page 6).

**TIP:** You can also adjust stimulation intensity levels from the base unit ([Setting the Intensity Level Using the Base Unit](#), page 3).

**NOTE:** If your dog breaches the boundary, the dog collar device applies stimulation for up to 1 minute and then stops to allow for a safe return.

**Tone:** Activates an audible tone. A tone can be used as either a positive or negative training cue, depending on your training program.

**Vibration:** Applies vibration to the dog the entire time the dog is at the boundary, for a maximum of 8 seconds. The effectiveness of vibration may vary based on the dog's temperament and experience.

**NOTE:** If your dog breaches the boundary, the dog collar device applies vibration for up to 1 minute and then stops to allow for a safe return.

## Setting the Intensity Level Using the Base Unit

- 1 On the base unit, select a dog.
- 2 Select **Stimulation**.
- 3 Select an intensity level appropriate for the training phase and your dog.

## Choosing the Correct Intensity Level

- 1 Set the intensity to the lowest level ([Setting the Intensity Level Using the Base Unit](#), page 3).
- 2 Observe the dog for a reaction, such as a head shake, neck movement, or just a change in expression.  
Sometimes dogs will vocalize due to the surprise of the electrical stimulation. If the dog vocalizes more than once, the intensity level is too high for beginning training.
- 3 If there is no reaction, increase the intensity level by one level until the dog has a slight but recognizable reaction to the stimulation.

The intensity level that causes a slight but recognizable reaction is your dog's baseline level for beginning collar training. You do not need to, and should not, apply this intensity selection test again.

After you begin training, the dog's performance guides your intensity selection. As the dog advances in training, you may need to change the level depending upon the training situation.



## Training Your Dog to Use the Boundary

Before you can use the Delta Inbounds wireless containment system, you must train your dog to use the boundary.

When using the wireless containment system the first time, you should complete these tasks to train your dog to be aware of the boundary and the consequence if your dog crosses the boundary. Proper training of your dog is essential to the success of the wireless containment system.

- 1 Introduce your dog to the boundary (*Introducing Your Dog to the Boundary, page 4*).
- 2 Reinforce boundary awareness using stimulation (*Reinforcing Boundary Awareness Using Stimulation, page 4*).
- 3 Test boundary awareness using distraction (*Testing Boundary Awareness Using Distraction, page 4*).
- 4 Supervise your dog's boundary awareness (*Supervising Your Dog's Boundary Awareness, page 5*).

### Training Timeline

Training Phase	Training Method	Frequency	Duration
Introducing your dog to the boundary ( <i>Introducing Your Dog to the Boundary, page 4</i> )	Tone	3 times per day	10 to 15 minutes
Reinforcing boundary awareness using stimulation ( <i>Reinforcing Boundary Awareness Using Stimulation, page 4</i> )	Vibration or stimulation	3 times per day	10 to 15 minutes
Testing boundary awareness using distraction ( <i>Testing Boundary Awareness Using Distraction, page 4</i> )	Vibration or stimulation	3 times per day	10 to 15 minutes
Supervising your dog's boundary awareness ( <i>Supervising Your Dog's Boundary Awareness, page 5</i> )	Tone, stimulation	Determined by the owner or trainer, and based on your dog's responsiveness to training	Begin with 10 to 15 minutes, and gradually increase to more than 1 hour

### Introducing Your Dog to the Boundary

Before you introduce your dog to the boundary, you should turn off stimulation on the dog collar device, and set up the boundary (*Setting up a Boundary, page 2*).

This training phase trains your dog that the boundary flags and warning beep from the dog collar device define the new safe area.

**TIP:** You should have small treats and your dog's favorite play toy available.

- 1 Attach the leash to a separate, non-metal collar positioned above the dog collar device.  
**NOTE:** Be sure the extra collar does not put pressure on the contact points.
- 2 Calmly walk your dog on a leash inside the containment area.
- 3 With full control of your dog on a leash, walk to the flags.  
As your dog reaches the boundary, the dog device beeps.
- 4 Allow your dog to stay at the boundary for up to 2 seconds, and then guide the dog back to the containment area.

You should immediately praise your dog as he enters the containment area, even though you helped guide him with the leash.

- 5 Repeat this process at the same flag until your dog resists going to the boundary.
- 6 Plan to master three or four flags per session.

**TIP:** You should praise your dog if he quickly returns or resists going to the boundary.

**TIP:** You should make a game out of training your dog to come back into the containment area each time he hears the tone from the dog device.

### Reinforcing Boundary Awareness Using Stimulation

When your dog becomes familiar with the boundary and returns to the containment area when he hears a tone, you are ready to enable correction.

This training phase trains your dog to stay in the containment area and respect the boundary.

**TIP:** You should have small treats and your dog's favorite play toy available.

- 1 On the base unit, set the stimulation level of the dog collar device to the lowest setting, or enable vibration (*Setting the Intensity Level Using the Base Unit, page 3*).
- 2 Repeat the procedure to introduce your dog to the boundary (*Introducing Your Dog to the Boundary, page 4*).

**NOTE:** When your dog is in the boundary area and hears a tone, he will also feel a mild stimulation or vibration. You should watch for a slight reaction to the stimulation such as looking around, raising his ears, turning his head, or otherwise indicating he is feeling something different than normal.

- 3 If your dog does not respond to stimulation when he reaches the boundary, confirm that the dog collar device fits properly.
- 4 If the dog collar device fits properly and your dog does not respond to the stimulation, increase the stimulation level by one.

**NOTE:** Vibration is a fixed level and cannot be adjusted.

- 5 Stay at the same flag until your dog resists going to the boundary.

Using tone and correction, your dog should avoid the boundary and stay in the containment area. When your dog returns to the containment area, you should praise him.

### Testing Boundary Awareness Using Distraction

When your dog understands the boundary and returns to the containment area when he hears a tone or receives a correction, you are ready to enhance the training by introducing distractions.

This training phase trains your dog to stay within the containment area even when tempted by distractions outside of the boundary.

**TIP:** You should have small treats and your dog's favorite play toy available.

- 1 Attach the leash to a separate, non-metal collar positioned above the dog collar device.  
**NOTE:** Be sure the extra collar does not put pressure on the contact points.
- 2 On the base unit, set the stimulation level of the dog collar device to a higher setting, depending on the reaction result from *Reinforcing Boundary Awareness Using Stimulation, page 4*, or enable vibration.
- 3 Walk your dog to the boundary and return to the containment area to confirm he has a clear understanding of the tone at the boundary.



- 4 Maintain control of your dog on the leash, and have someone complete an action to determine if your dog will test the boundary:
- Cross the boundary and stand outside of the containment area.
  - Throw a ball or treat outside of the containment area.
  - Walk another dog outside of the containment area.

#### NOTICE

Never coax or call your dog out of the containment area.

- 5 Complete an action:
- If your dog does not move toward the distraction, offer praise and a treat.
  - If your dog reacts to the distraction, allow your dog to go to the boundary.
  - If your dog does not turn back to the containment area after 2 seconds, use a leash to help your dog back to the containment area.
- NOTE:** Offer praise and a treat any time your dog returns to the containment area with or without help.
- 6 Gradually increase the distraction level.
- 7 Complete an action:
- If your dog does not respond to the stimulation, confirm that the dog collar device fits properly.
  - If the dog collar device fits properly and your dog does not respond to the stimulation, increase the stimulation level by one.
- 8 Repeat this process with other distractions.

**TIP:** You can use a variety of people during this process, including neighbors or other family members.

**TIP:** You should take your time and be patient with the training.

### Supervising Your Dog's Boundary Awareness

When your dog understands the boundary and returns to the containment area even when there are distractions present, you are ready to test how the dog responds off leash. You should only attempt this when you are completely confident that your dog is well trained to the boundary.

This training gives your dog free run of the containment area off the leash.

#### NOTICE

Do not leave your dog unattended in the containment area.

- 1 On the base unit, set the stimulation level of the dog collar device to the setting appropriate for your dog.
- 2 Play with your dog in the containment area as you normally would.
- 3 Stay in the containment area, and don't intentionally test the boundary.
- 4 After a while, allow your dog to explore the containment area while you stay in the area observing.  
**NOTE:** The dog should avoid the boundary area but otherwise behave normally.
- 5 Monitor your dog for several off leash training sessions, moving farther away from your dog for longer periods of time until you are confident your dog will stay in the containment area.

When you feel confident that your dog exhibits sufficient boundary awareness, your dog is ready to be left unattended. You should continue to monitor your dog at regular intervals while he uses the wireless containment system.

### Training Tips

- Keep the training process fun but firm.
- Be consistent in your training, including methods, commands, and rewards.
- Limit training to 10- or 15-minute sessions.
- Plan for approximately 3 weeks of training.  
**NOTE:** Training time may vary depending on how your dog responds to training.
- Adjust your training schedule or increase the amount of play time with your dog inside the boundary if your dog exhibits signs of stress.
- Use other containment options during the training period, including a dog pen, tie-out, or leash.
- Make sure your dog is ready to learn.  
Typically, a hungry dog is more motivated to learn with treats.
- Remove the dog collar device, and either pick up your dog or put your dog in the car to exit the boundary area.
- Finish each training session with lots of praise and play time.
- Remove the dog collar device after each training session.
- If your dog has problems learning a new stage in training, repeat the last stage where your dog was successful.
- Even when your dog is responding well to the training, continue consistent training until you are confident your dog understands the containment area and how to behave at the boundary.  
Being patient and consistent are critical to your dog's success with the wireless containment system.

### Taking Your Dog Out of the Boundary Area

#### NOTICE

Remove the dog collar device when taking your dog out of the boundary area.

Your dog will be reluctant to cross the boundary for walks or car rides when he is fully trained. You can use these methods to safely take your dog out of the boundary area. You can also turn off containment ([Turning Off Containment, page 5](#)).

- Replace the dog collar device with a regular collar.  
You can put your dog in a car that is inside the boundary and drive out of the boundary.
- Replace the dog collar device with a regular collar and leash.  
You can walk your dog out of the boundary and give a positive command at a specific boundary location. For example, say "OK" when you reach the end of the driveway or sidewalk. You should always leave the boundary with a leash at this location so your dog will associate leaving the boundary on a leash, at this location, and with a person. Initially, you may need to offer treats and praise to convince your dog to leave the boundary. If needed, you can carry your dog out of the boundary.

### Turning Off Containment

You can turn off containment from the base unit. For example, when your dog is in the house or before going on walks.

When containment is off, you can use the features of the dog collar device, such as the BarkLimiter™ feature, and other options available in the Garmin Canine app.

- 1 On the base unit, select a dog.
- 2 Select **Containment > Off**.

## BarkLimiter

### NOTICE

Before playing with your dog, you should remove the dog collar device or deactivate the BarkLimiter feature.

When using the BarkLimiter feature, you should remove all other collars, tags, or other items from your dog. These other items can cause the BarkLimiter feature to activate when the dog is not barking.

The BarkLimiter feature can correct your dog automatically when the dog barks. The device detects vibrations to distinguish between barking and other vocalizations. You can use the Garmin Canine app to manually adjust the amount of barking allowed. You can allow no barking or set a custom number to indicate how many barks are allowed before correcting your dog. You can also allow some barking (up to 5 barks) to help avoid unintentional corrections resulting from everyday activity, such as yawning, sneezing, or going through a dog door.

You can use any of these methods when correcting your dog with the BarkLimiter feature.

- Tone
- Vibration
- Fixed stimulation
- An automatic, gradual increase in stimulation intensity (auto-rise)

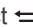
**NOTE:** If you turn off all correction methods, the device continues to detect your dog's barks without performing any corrections. This can help you track your dog's barking behavior using the Garmin Canine app.

### Automatic Intensity

The device can set the stimulation intensity level automatically based on the barking behavior of the dog. The device starts at the lowest intensity level and increases the intensity level gradually until the dog stops barking. When the dog is quiet, the intensity decreases over time.

The automatic intensity feature is designed to eliminate excessive nuisance barking. To stop barks more immediately, you should set the intensity level manually.

### Enabling the BarkLimiter Feature

- 1 On the base unit, select a dog.
- 2 Select **Bark Limiter > On**.
- 3 Select an option:
  - To enable training with stimulation, select **Stimulation > On**.  
**NOTE:** After you set the stimulation level, there is a 2 minute wait time before a correction occurs.
  - To enable training with audible tones, select **Tone > On**.
  - To enable training with vibration, select **Vibration > On**.
- 4 Select  to return to the main menu.

### Status LED

LED Activity	Status
Flashing white	When using the BarkLimiter feature, a bark was detected, and no correction was applied. A boundary breach occurred.
Flashing red	When using the BarkLimiter feature, a bark was detected, and a correction was applied.

## Garmin Canine App

The Garmin Canine app allows you to review your dog's daily activity and get insights into your dog's behavior. The app also allows you to wirelessly send software updates to your dog

device. You can pair Keep Away Tag sensors to keep your dog out of undesired areas.

**Manage containment settings:** Allows you to set up and turn off containment.

**Set up bark correction:** Allows the device to detect and correct barks automatically. You can adjust the method of the corrections. When using stimulation, you can adjust the intensity level or use auto-rise.

**Set up Keep Away Tag sensors:** Allows you to pair up to 30 Keep Away Tag sensors. You can give each sensor a descriptive name to identify its location, set the effective range for your dog, and adjust the method of the corrections.

**Analyze your data:** You can view summary data, including your dog's daily activity level and number of barks. You can view more detailed information about your dog's activity, including event times and corrective actions used. You can also view the number of times the dog has entered into the range of paired Keep Away Tag sensors.

**NOTE:** Some data requires an optional Keep Away Tag sensor.

**Set up family members and dogs:** Allows you to create and edit dog profiles, pair compatible dog collar devices, and invite other family members.

## Pairing Your Smartphone with the Dog Collar Device

You can use the Garmin Canine app on your compatible smartphone to pair your dog collar device using Bluetooth® Smart wireless technology.

- 1 Go to [www.garmin.com/apps](http://www.garmin.com/apps), and download the Garmin Canine app to your smartphone.
- 2 Open the Garmin Canine app on your smartphone.
- 3 Follow the on-screen instructions to create an account, set up your dog profile, and pair the dog collar device.
- 4 Bring your smartphone within 10 m (33 ft.) of the dog collar device.

When the device is paired with your smartphone, a message appears.

## Syncing the Dog Collar Device with the Garmin Canine App

Garmin® recommends you sync your device daily to review updated data in the app and receive important notifications, such as low battery alerts and software updates.

- 1 Bring your smartphone within 10 m (33 ft.) of the dog collar device.  
**TIP:** You may need to wake the device if your dog is stationary for a long period of time.
- 2 Open the Garmin Canine app.  
The dog collar device periodically syncs data with the Garmin Canine app automatically. The app indicates when the last sync occurred.
- 3 View your current data in the Garmin Canine app.

## Pairing a Dog Collar Device with the Base Unit

**NOTE:** If your base unit and dog collar device were included in the same package, the devices are paired from the factory.

- 1 If you are adding another dog collar device, turn off the dog collar device that is already paired with the base unit.  
**NOTE:** During the pairing process, you should only turn on one dog collar device at a time.
- 2 On the base unit, press **OK**.

- 3 Select **Add Collar**.
- 4 Turn on the dog collar device.  
The base unit searches for the device and displays a collar ID when it is found.
- 5 On the base unit, press **OK**.  
The base unit displays a message when the device is paired, and the LED on the dog collar device flashes.
- 6 Press **OK** to complete the pairing process.

## Keep Away Tag Sensor

You can use a Keep Away Tag sensor to keep your dog away from undesired locations, such as a trash can.

**NOTE:** If you do not have this sensor, you can skip this section.

### Installing the Battery

- 1 Locate the circular battery cover ① on the back of the Keep Away Tag sensor.



- 2 Twist the cover counter-clockwise until it is loose enough to remove.
- 3 Remove the cover.
- 4 Place the battery into the cover with the positive side facing the inside of the cover.  
**NOTE:** Do not damage or lose the O-ring gasket.
- 5 Replace the cover by aligning the dots ② and rotating clockwise.

When paired with a compatible dog collar device, the Garmin Canine app indicates when less than 1 wk. battery life remains for the sensor.

**TIP:** To replace the battery, you can use a piece of tape ③ or a magnet to remove the battery from the cover.



### Pairing the Sensor with Your Device

Pairing is the process of connecting an ANT+® wireless sensor, like the Keep Away Tag sensor, with a compatible dog collar device. Your sensor and device must be paired directly through the Garmin Canine app on your compatible smartphone.

- 1 Install the battery in the sensor.  
The sensor turns on.
- 2 Go to [www.garmin.com/apps](http://www.garmin.com/apps), and download the Garmin Canine app to your smartphone.
- 3 Open the Garmin Canine app on your smartphone.
- 4 Follow the on-screen instructions to pair the sensor with your device.
- 5 Bring your smartphone within 3 m (10 ft.) of the sensor and the device.  
**NOTE:** Stay 10 m (33 ft.) away from other sensors while pairing.
- 6 Hold the sensor and dog collar device together.

When the sensor and device are paired, a message appears.

- 7 Follow the on-screen instructions to set the range.
- 8 Follow the on-screen instructions to select corrective actions.

### Tips for Setting the Range

You can use the Garmin Canine app to set and test the effective range of the sensor (up to 1 m). The sensor is designed to keep your dog away from a small, general area.

**NOTE:** The effective range of the sensor may vary based on environmental conditions. You should test the range to ensure the device and sensor perform as expected.

- After the sensor is installed, approach the sensor from multiple directions with the dog collar device to test the range.
- Adjust the effective range.
- For best results, select the smallest range necessary to keep your dog out of undesired areas.

**NOTE:** Corrections may be inconsistent if the range is set to a distance greater than 1 m (3 ft.).

### Installing the Sensor

You can use the included adhesive mount to install the sensor in the location your dog should avoid. For example, a trash can. You can install multiple sensors. Go to [buy.garmin.com](http://buy.garmin.com), or contact your Garmin dealer for information about optional accessories.

- 1 Attach one side of the adhesive mount to the center of the battery door.
- 2 Attach the other side of the adhesive mount to the location.

### Tips for Installing the Sensor

- For consistent performance, place the sensor in a location with an unobstructed view in all directions.
- For best results, do not place the sensor on or inside metal objects.

For example, to avoid a metal trash can, you can install the sensor on the wall near the trash can.

- Do not put the sensor in water.
- Do not bury the sensor.

## Pairing the Remote with Your Device

Before you can use the remote with your device, you must pair your dog collar device with the Garmin Canine app on your smartphone.

**NOTE:** If you do not have this accessory, you can skip this section.

- 1 From the app store on your smartphone, install and open the Garmin Canine app.
- 2 From the app menu, select **My Family**.
- 3 Select a dog to pair with the remote.
- 4 Follow the instructions in the app to pair the remote with your device.

After the remote is paired, it connects to your device whenever the device is in range and turned on.

## Customizing Your Device

### Setting an Alert Tone

You can enable or disable tones to alert on the base unit when your dog approaches the boundary.

Select **Alert Tones > OK**.

## Setting the Time

- 1 Select **Time**.
- 2 Select an option:
  - To set the time to a 12-hour or 24-hour format, select **Time Format**.
  - To set the time of day, select **Time**.

## Resetting the Device to Factory Settings

You can restore all of the device settings to factory default values.

Select **Factory Reset**.

## Device Information

### Viewing Dog Collar Device Information on the Base Unit

You can view dog collar device status information, such as the remaining battery power of a dog collar device.

Select  $\wedge$  or  $\vee$  to scroll through the list of collars.

### Base Unit Specifications

Battery type	User-replaceable alkaline for back up
Battery life	Up to 4 days
Operating temperature range	From -20° to 60°C (from -4° to 140°F)
Wireless frequency/protocol	2.4 GHz @ 18 dBm nominal
Water rating	IEC 60529 IPX7*

\*The device withstands incidental exposure to water of up to 1 m for up to 30 min. For more information, go to [www.garmin.com/waterrating](http://www.garmin.com/waterrating).

### Delta Inbounds Dog Collar Device Specifications

Battery type	Rechargeable lithium-ion
Battery life	Up to 2 wk. Up to 1 wk. with Keep Away Tag
Operating temperature range	From -20° to 60°C (from -4° to 140°F)
Charging temperature range	From 0° to 45°C (from 32° to 113°F)
Storage temperature range	From -20° to 85°C (from -4° to 185°F)
Wireless frequency/protocol	2.4 GHz @ 3 dBm nominal
Water rating	1 ATM*

\*The device withstands pressure equivalent to a depth of 10 m. For more information, go to [www.garmin.com/waterrating](http://www.garmin.com/waterrating).

### Keep Away Tag Specifications

Battery type	User-replaceable CR2032, 3 V
Battery life	Up to 3 mo.
Operating temperature range	From -20° to 60°C (from -4° to 140°F)
Wireless frequency/protocol	2.4 GHz @ 3 dBm nominal
Water rating	IEC 60529 IPX7*

\*The device withstands incidental exposure to water of up to 1 m for up to 30 min. For more information, go to [www.garmin.com/waterrating](http://www.garmin.com/waterrating).

## Product Updates

On your computer, install Garmin Express™ ([www.garmin.com/express](http://www.garmin.com/express)).

This provides easy access to these services for Garmin devices:

- Software updates

- Product registration

## Updating the Software Using Garmin Express

Before you can update your device software, you must download and install the Garmin Express application and add your device.

- 1 Connect the device to your computer using the USB cable.  
When new software is available, the Garmin Express application sends it to your device.
- 2 After the Garmin Express application finishes sending the update, disconnect the device from your computer.  
Your device installs the update.

## Garmin Support Center

Go to [support.garmin.com](http://support.garmin.com) for help and information, such as product manuals, frequently asked questions, videos, and customer support.

## Troubleshooting

### Tips for Improving Corrections

If your dog is being corrected at unexpected times, you can try these options.

- Place the flags at the exact location of the correction.  
The actual range of the boundary may vary based on interference.
- Ensure there are no 2.4 GHz transmitters nearby, such as wireless routers or microwaves.
- Ensure there are no large metal objects nearby, such as sheds or cars.
- Ensure the base unit is mounted at least 1.5 m (5 ft.) above the ground.
- Increase or reduce the boundary based on your testing.  
You can set a boundary of up to 50 m (170 ft.). You may need to reduce the range to be most effective.
- Turn off the dog collar device before turning off the base unit.  
The dog is corrected when the collar loses communication with the base unit.

### How can I keep my dog away from an area inside the containment area?

Install a Keep Away Tag sensor on an object inside the containment area, such as a flower bed or trash can ([Keep Away Tag Sensor](#), page 7).

### Can I use the containment system for the entire yard?

For best results, you should contain your dog in either your front or back yard. Depending on the size of your house and yard, the range might be sufficient for your entire yard. You should mount the base unit in a central location and test the effective range.

### The base unit displays an error


If the base unit displays an error when retrieving data, you can try these options.

- From the collar screen, select **OK**.  
A message appears when the base unit is retrieving data.
- Ensure there are no 2.4 GHz transmitters nearby, such as wireless routers or microwaves.

### The base unit is not sounding an alert tone

If the base unit is not sounding an alert tone when the dog approaches the boundary, you can try these options.



- From the base unit, select **Alert Tones > OK > On** to enable alert tones.
- Ensure the home screen is displayed on the base unit.  
**TIP:** You can select  to return to the home screen.

## My dog collar device is not responding

If you are having trouble connecting the dog collar device to the Garmin Canine app or the base unit, you can try these options.

- Wake the device by shaking it.  
The dog collar device maximizes battery life by entering sleep mode when the device is stationary.
- Turn the device off and on again.

## How do I know which dog collar device is paired?

If you have more than one paired dog collar device, you can use the Garmin Canine app to determine which device is paired before fitting the collar on your dog. This helps ensure you are training the correct dog, because all BarkLimiter and Keep Away Tag settings are stored on the dog collar device.

- 1 Open the Garmin Canine app on your smartphone.
- 2 In the training remote, select the tone option.  
The device sounds an audible tone.

## My dog is still barking

If the dog continues barking while wearing the device, you can try any of these options to improve the effectiveness of the device.

- Tighten the collar until it is very snug ([Fitting the Collar on Your Dog, page 3](#)).
- Adjust the position of the device on the dog's neck ([Fitting the Collar on Your Dog, page 3](#)).
- Wiggle the device to work the contact points through the dog's coat.
- Gradually increase the intensity level ([Choosing the Correct Intensity Level, page 3](#)).

## The bark detection is too sensitive

If the BarkLimiter feature activates when the dog is not barking, or if the bark detection appears to be too sensitive, you can try these tips.

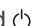
- Use the Garmin Canine app to adjust the amount of barking allowed before correcting your dog.
- Use the Garmin Canine app to turn off the BarkLimiter feature during heavy play, when the dog is very active, or when the dog is eating.
- Remove all other collars, tags, or other items from your dog.

## Maximizing Battery Life

- Disable all unused Keep Away Tag sensors.

## Resetting the Dog Collar Device

If your dog collar device stops responding, you can reset the device.

Hold  for 8 seconds and the device beeps.

# Index

## A

ANT+ sensors 7, 8  
    pairing 7  
apps, smartphone 6

## B

bark correction 6, 9  
battery  
    installing 1, 7  
    level 8  
    maximizing 9

## C

charging 1  
collar  
    attaching strap 2  
    contact points 1, 3  
    fitting 3  
    pairing 6  
contact points 1, 3, 9

## D

dog  
    status 6  
    training 3–5  
    training basics 2  
    training intensity levels 3  
dog collar device 1, 6

## G

Garmin Express, updating software 8

## H

history 6  
    deleting 8

## I

initial setup 2  
installing 7  
intensity level 9  
    automatic 6  
    choosing 3  
    setting 3

## K

keys 1

## P

pairing  
    ANT+ sensors 7  
    collar 6  
    remote control 7  
    smartphone 6  
power key 1

## R

remote control, pairing 7  
resetting the device 8, 9

## S

smartphone, pairing 6  
software, updating 8  
specifications 8

## T

time of day 8  
tones 7  
training  
    distraction 4  
    stimulation 3, 4  
    tone 3, 4  
    vibration 3, 4  
troubleshooting 5, 7–9

## U

updates, software 8  
USB 8





